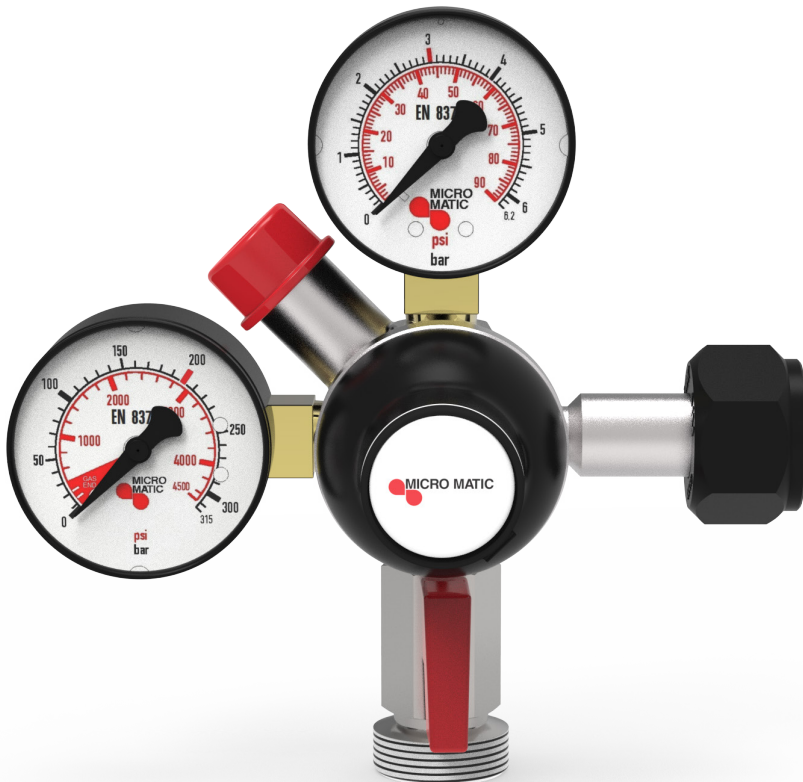


PERFECTPLUS50 REGULATOR

PRIMARY & SECONDARY



DEDICATED TO
DRAFT QUALITY

PRIMARY & SECONDARY

FEATURES

- High performing gas regulator for high gas throughput
- Accurate pressure control system
- Integrated pressure safety relief valve for primary
- Stainless steel cartridge piston
- High precision casted housing
- SK approved based on DIN 6650
- Each product one serial number for traceability
- Adjust screw protected by tamper evident cap
- Allen key adjustment (key included)
- Pressure adjusting knob for pressure setting (optional)

SPECIFICATION

- Material:
 - Regulator body: Die casted body with CuNi coating
 - Inlet connection: Stainless steel
 - Wall brackets: Stainless steel
- Inlet connections:
 - CO2: W 21.8 x 1/14
- Outlet connection: With or without shut-off valve
 - male thread: 1/2" – 5/8" – 3/4" BSP
 - female thread: 1/4" NPT
 - push-in fitting: Tube size 3/8" or 5/16"
 - other connection: On request
- Inlet pressure: Nominal 60 bar (CO2)
- Working pressure: From 0,5bar up to 90% of the nominal pressure indicated on the low pressure gauge
- High pressure gauge: Standard 0-315 bar
- Low pressure gauge: Standard 0-6bar / 0-10bar

BENEFITS

- High capacity CO2 flow of 50 L/min continuous
- Supplies 5 taps at a dispense flow rate of 3l/min
- Stable CO2 pressure from full to empty cylinder
- Easy replaceable inlet filter with 100my pore size
- Venting function to release gas for lower setting
- Maintenance free end designed for long life
- Modern production high quality production process
- Comply with Pressure Directive 2014/68/EU
- Manufacturing in accordance with ISO 9001 quality control system

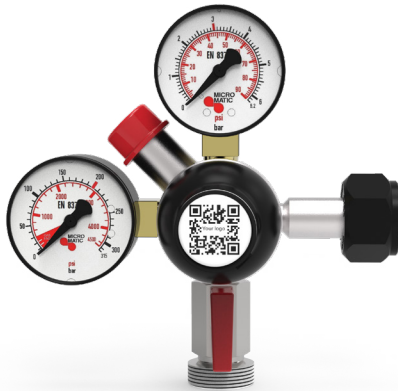
- Pressure relief valve: Settings can be customized - Standard 3bar, 4bar, 7bar
- Capacity: 50 l/min constant gas flow
- Weight: Variable from approx. 0.7 kg
- Dimensions mm: Variable from approx. 150 x 150 x 80
- Media: CO2 (food grade gas quality only)

PRIMARY & SECONDARY

REGULATOR OPTIONS:

Tamper Evident Cap

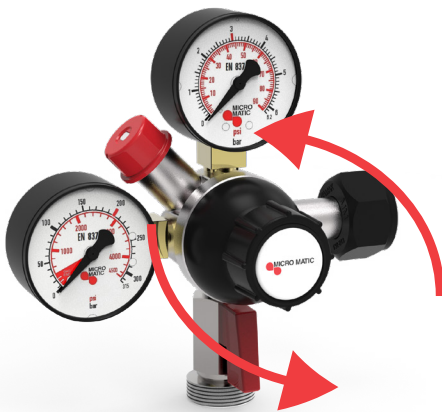
Optional with customer logo or customer QR code



Bottle wrench mounted to the regulator nut



Pressure adjusting handwheel



Empty bottle indicator



Gauge protection cab



PerfectPlus50 Secondary

