

DISPENSE HEAD

L-SYSTEM



DEDICATED TO
DRAFT QUALITY

DISPENSE HEAD

L-SYSTEM

PRODUCT

- MF-L Dispense Head for Soft Drink

SPECIFICATION

- Body: - Brass - Tin/Nickel plated
- Probe: - Stainless steel
- O-Rings: - Recessed in body
- Handle: - F1 Handle

OPTIONS

- Body
 - in stainless steel
 - with product relief valve (PRV)
- CO₂ Connection
 - Integrated with sight glass
 - With/without CO₂ integrated non-return valve
- Product Probe
 - Straight bore 8.5 or 10 mm
 - 16 mm diameter with product non-return-valve
- Product Non-return valve
 - Torpedo

BRANDING

- The handle can be individually branded according to brewery requirement

SPARE PARTS

F1 Handle

O-ring

Body

Pin

O-ring 2 pcs.

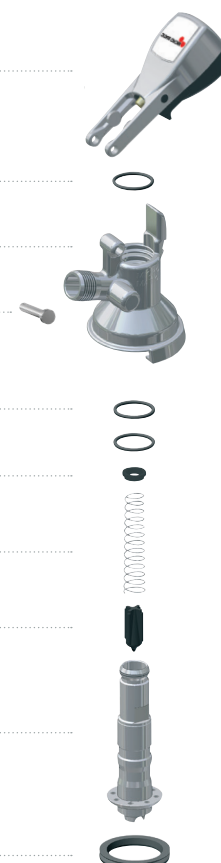
Spring retainer

Spring for torpedo

Non-return valve

Probe

Main gasket



MF-L

Product	Item No.	Material
F1 Handle	762-101	Stainless steel
O-rings (3 pcs)	102-580	EPDM
Body	738-303	Brass (tin/nickel plated)
Pin	762-120	Stainless steel
Spring retainer	102-866	POM
Spring f. torpedo	100-619	Stainless steel
Non-return valve	102-595	PP/Evoprene
Probe	738-104	Stainless steel
Main gasket	102-895	EPDM