

DISPENSE HEAD

D-SYSTEM



DEDICATED TO
DRAFT QUALITY

DISPENSE HEAD

D-SYSTEM

PRODUCT

- MF-D Dispense Head

SPECIFICATION

- Body: - Brass - Tin/Nickel plated
- Probe: - Stainless steel
- O-Rings: - Recessed in body
- Handle: - F1 Handle

OPTIONS

- Body
 - in stainless steel
 - with product relief valve (PRV)
- CO₂ Connection
 - Integrated with sight glass
- Product Probe
 - Straight bore 7, 8.5 or 10 mm
 - 16 mm diameter with product non-return-valve
- Product Non-return valve
 - Torpedo or ball and retainer

BRANDING

- The handle can be individually branded according to brewery requirement

SPARE PARTS

F1 Handle

O-ring

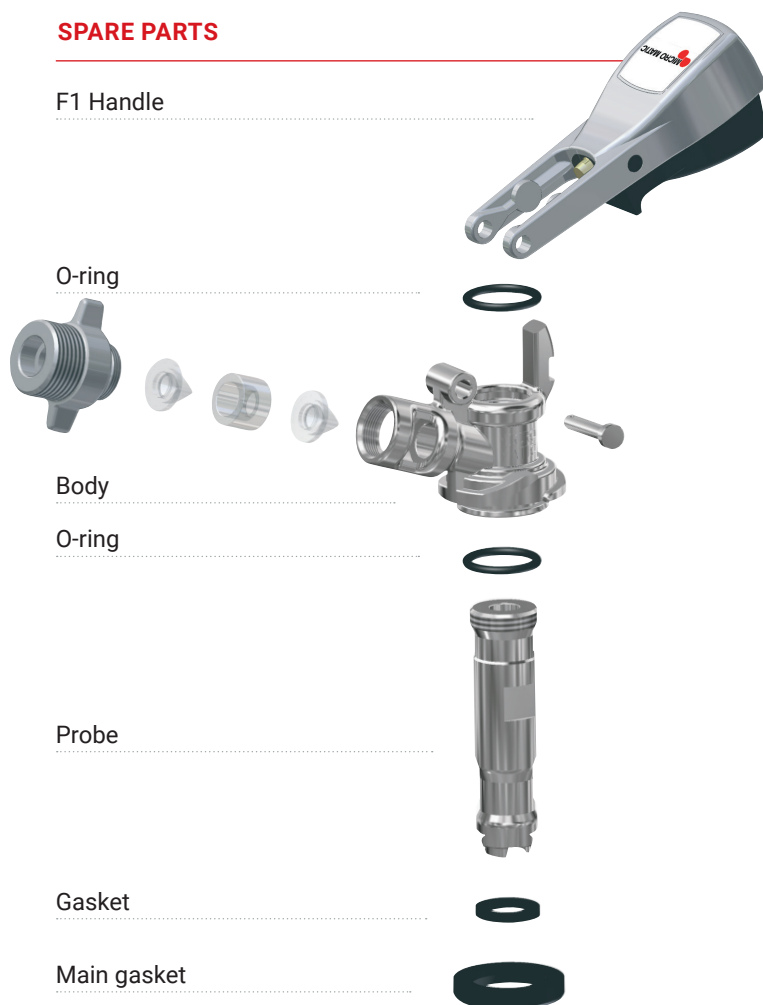
Body

O-ring

Probe

Gasket

Main gasket



Product	Item No.	Material
O-Rings	102-526	Nitrile
Body	707-473	Brass (Tin/nickel plated)
Probe	733-314	Stainless steel
Gasket	102-376	Nitrile
Main gasket	102-521	Nitrile
F1 Handle	762-101	Stainless steel/POM
Locking Pin	762-120	Stainless steel
Wing Nut 3/4"	401-471	Brass (Tin/nickel plated)
Non-return valves	701-436	Silicone
Sight glass	102-547	Polycarbonate